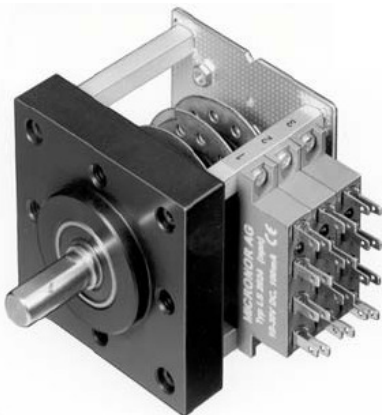


Serie DS 60



- **Optischer Elektroniksensor** (berührungslos) PNP
Electronic sensor optical (contactless)
- **Speisespannung** (Antivalenten Ausgänge) 10...30 VDC (100 mA)
Power Supply (Output antivalent)
- **Programmkanäle** (einstellbar) 3 + 5
Program channel (free setting)
- **Eingangsübersetzungen** 1:1...2500 : 1
Input ratios

Technical data

Auswahltypen (Speisespannung)	Selecting table (Power Supply)	LS24.PNP	(10...30V DC / 2x 100 mA)
Hellschaltung (Öffner) Dunkelschaltung (Schliesser) Der leitende Ausgang Nr. 4 wird durch das Aufleuchten der Leuchtdiode angezeigt	Normally closed (Bright) Normally open (Dark) The LED shows output tag no. 4 is on supply voltage	3 (NC) 4 (NO)	
Einschaltdauer Auflösung Max. Schaltstrom Schaltfrequenz Stromaufnahme	Operating time Resolution Peak switching Switching frequency Current consumption	100 % ED 1 % ~1 mm 100 mA 500 Hz <20 mA	
Verstellbare Doppelnockenscheibe Programmiermöglichkeiten Anzahl Impulse pro Umdrehung Einstellbereich	Adjustable double cam Programming possibilities Number of pulses per revolution Adjustable range	NKL4201.180° 1 <0,5°...359,5°	
Skala innen (vorne flach)	Scale inside (flate frontside)	S360 (0...360°)	
Zubehör Programmierschlüssel für NKL	Accessories program key For NKL	PL	
Option Drehknopfskala (aussen) Anzeige für die Programmstellung Manuelle Vorwahl einer bestimmten Position	Option Knob and scale (out side) Indication of the existing program position The manual preselection of a particular program position	SK360 (0...360°)	

Serie DS 60

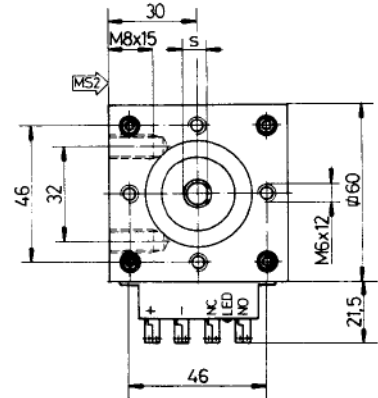
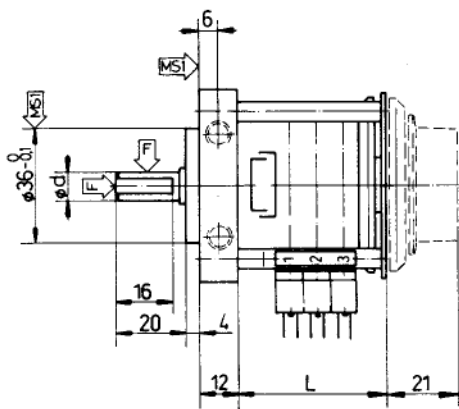
Outline drawing

- L = siehe Anzahl Schalter
 L = Please see number of switches

Welle zu Endschalter / Shaft to switches

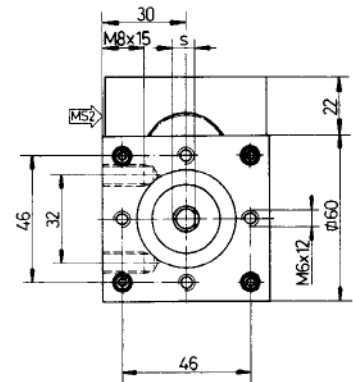
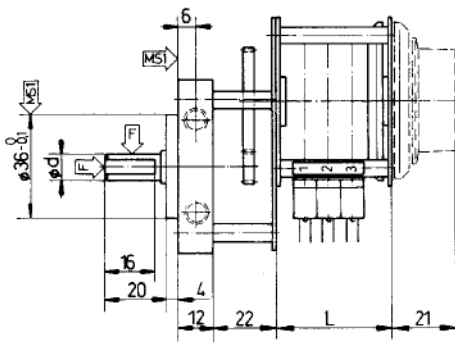
U 1:1

$\phi d = 9\text{-h8}$ $s = 8,5$ $F \Rightarrow = 40\text{ N}$ $\Downarrow = 80\text{ N}$ MS = Montagefläche / Mounting surface



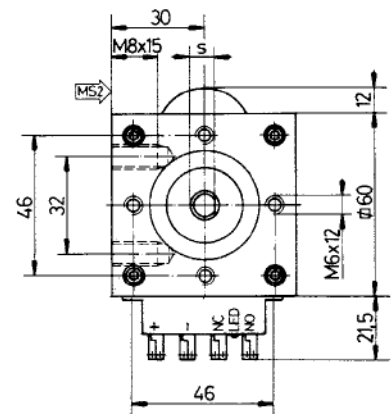
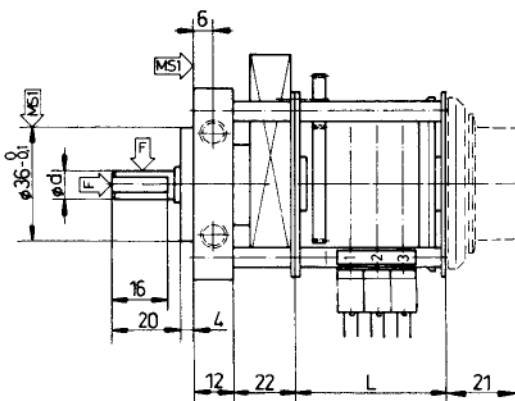
Eingangsuntersetzung (einstufig) / Input ratio (one stage)

U x:1



Eingangsuntersetzung (mehrstufig) / Input ratio (more stages)

M x:1



Serie DS 60

Order key

DS60 3 U1 1

Dimension: 2.36 x 2.36 inch

Size (mm) / Number of switches:

Dimension: 3
44 mm (U1:1 + more stage Mx:1)
03 = 36 mm (one stage Ux:1)
0 Switches
0 Program channels (free setting) (NKL4201.180°)
1 Program key für NKL (PL)

Dimension: 3
44 mm -> Size (U1:1 + more stage Mx:1)
36 mm -> Size (one stage Ux:1)
3 = 3 Switches
3 Program channels (free setting) (NKL4201.180°)
1 Program key für NKL (PL)

Dimension: 5
60 mm -> Size (U1:1 + more stage Mx:1)
52 mm -> Size (one stage Ux:1)
5 = 5 Switches
5 Program channels (free setting) (NKL4201.180°)
1 Program key für NKL (PL)

Input ratios (Shaft to switches): --> U = one stage; M = more stage

U1 = 1:1	M1 = 12,5:1
U2 = 1,25:1	M2 = 20:1
U3 = 1,5:1	M3 = 25:1
U4 = 2:1	M4 = 37,5:1
U5 = 2,6:1	M5 = 40:1
U6 = 2,75:1	M6 = 52,5:1
U7 = 3,5:1	M7 = 75:1
U8 = 4:1	M8 = 100:1
U9 = 5:1	M9 = 200:1
U10 = 6,5:1	M10 = 300:1
	M11 = 420:1
	M12 = 600:1
	M13 = 750:1
	M14 = 1200:1
	M15 = 2250:1
	M16 = 2500:1

Option types (current voltage):

1 = LS24 PNP (10...30V DC / 2x 100mA)
2 = -