

Serie MR401



- 2-dimensional inclination sensor with measurement range $\pm 10^\circ$, $\pm 45^\circ$, $\pm 60^\circ$
- High resolution and accuracy
- 0...10V voltage interface
- Robust, simply mountable ABS-housing
- Temperature range -40°C to $+80^\circ\text{C}$
- Application:
 - Industry automation
 - Agricultural and forestry machines
 - Utility vehicles
 - Crane and hoisting technology

Order key
Type

Inclination Sensor
MR401

General Parameters

Measurement axes	2 (X / Y)
Measurement ranges	$\pm 10^\circ / \pm 45^\circ / \pm 60^\circ$
Resolution	0.02° / 0.05° / 0.08°
Calibration accuracy (at 25° C)	$\pm 0.1^\circ / \pm 0.5^\circ / \pm 0.8^\circ$
Nonlinearity	max. $\pm 0.2^\circ / \pm 0.3^\circ / \pm 0.4^\circ$
Temperature range (zero point)	max. $\pm 0.02^\circ / \text{K}$
Cut-off frequency	typ. 18 Hz (without averaging)
Temperature range	-40°C to $+80^\circ\text{C}$

Characteristics

Interface	voltage output 0V ... 10V
-----------	---------------------------

Electrical Parameter

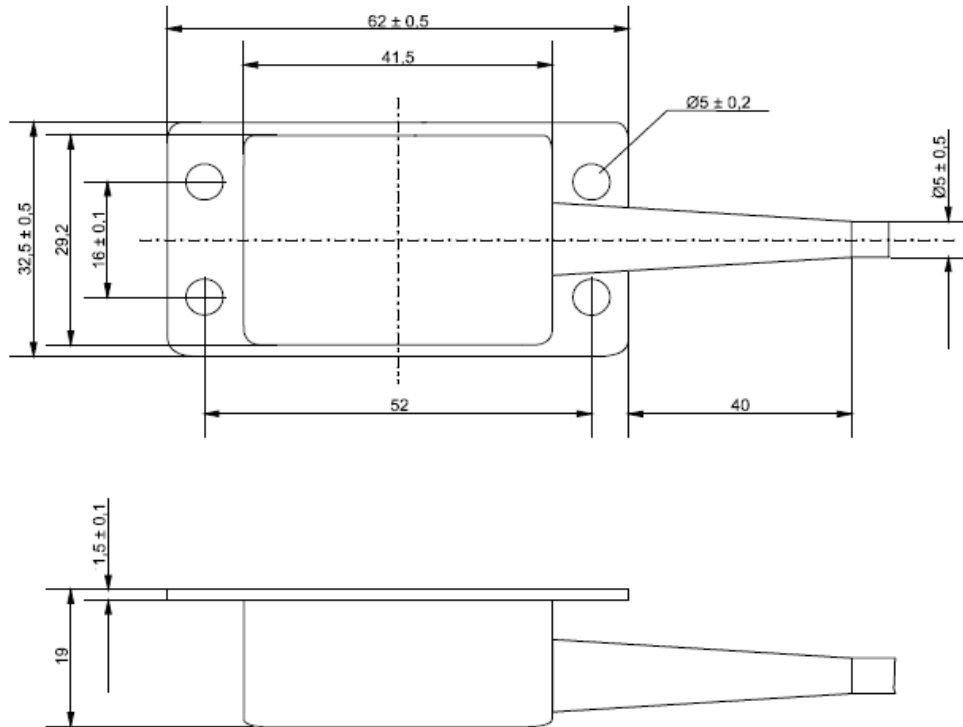
Supply voltage	11 to 30 V DC
Current consumption	30mA to 40mA

Mechanical Parameter

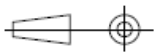
Connector	sensor-aktor connector 5-pole (M12)
Degree of protection	IP65/67
Shock survival	max. 20.000g
Dimensions	65mm x 35mm x 20mm
Weight	about 96g

Serie MR401

Outline drawing



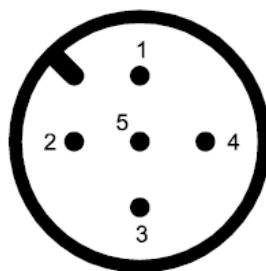
EUROPEAN PROJECTION



Dimensions in mm

Connector assembly-allocation

- 1 = Supply voltage
- 2 = Sensorsignal Y-Axis (Y-OUT)
- 3 = GND-Supply (V- / GND)
- 4 = Sensorsignal X-Axis (X-OUT)
- 5 = Potential Sensorsignal (GND-SENS)



Order key

