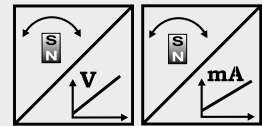


POSIROT®
PRAS5
Magnetic angle sensor with analog output



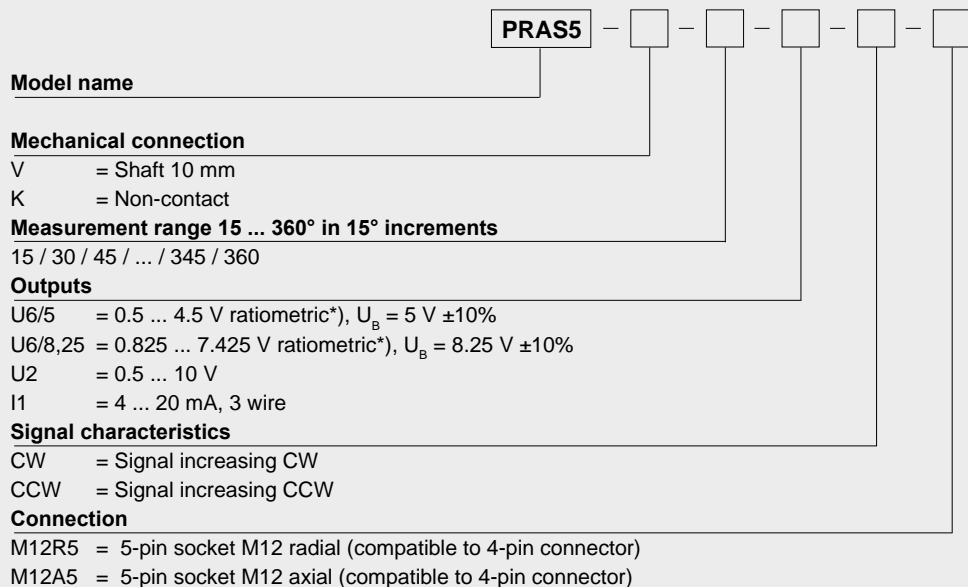
Magnetic angle sensor 0 - 360° in a flat housing with 66 mm resp. 68.2 mm dia.

- With 10 mm shaft or non-contact
- Protection class IP67/IP69K
- Magnetic measurement principle
- **Outputs:**
 Voltage 10 ... 90 % ratiometric or
 0.5 ... 10 V or
 Current 4 ... 20 mA
- Other outputs on request



Specifications	Outputs	Voltage 10 ... 90 % ratiometric; 0.5 ... 10 V Current 4 ... 20 mA, 3 wire
	Resolution	0.03 % (60 ... 360°); 0.1 % (15 ... 45°)
	Repeatability	±0.03 % (60 ... 360°); ±0.1 % (15 ... 45°)
	Linearity	±0.3 % f.s. (typ.); a misalignment of the position magnet has an effect on the linearity
	Measurement range	0 ... 15° to 0 ... 360°, standard 360°
	Signal characteristics	CW, CCW
	Material	Stainless steel / aluminium / zinc (depends on the model)
	Mounting	Screws M8
	Protection class	IP67/IP69K housing (with IP69K connector cable)
	Connection	5 pin socket M12
	Shock	EN 60068-2-27:1993, 100 g/11 ms, 100 shocks
	Vibration	EN 60068-2-6:1995, 20 g 10 Hz-2 kHz, 10 cycles
	Life cycle of bearings (shaft version)	100 x 10 ⁶ revolutions (<1500 r.p.m.)
	Revolutions per minute (shaft version)	Max. 10,000 r.p.m.
Allowable shaft load	120 N radial, 120 N axial	

Order Code PRAS5

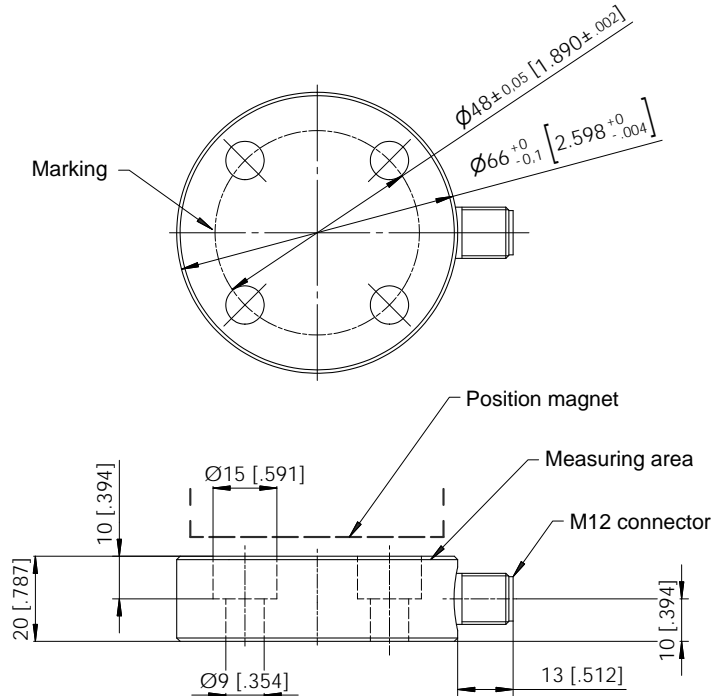


Order example: PRAS5 - V - 360 - U6/5 - CW - M12R5

POSIROT®
PRAS5
Magnetic angle sensor



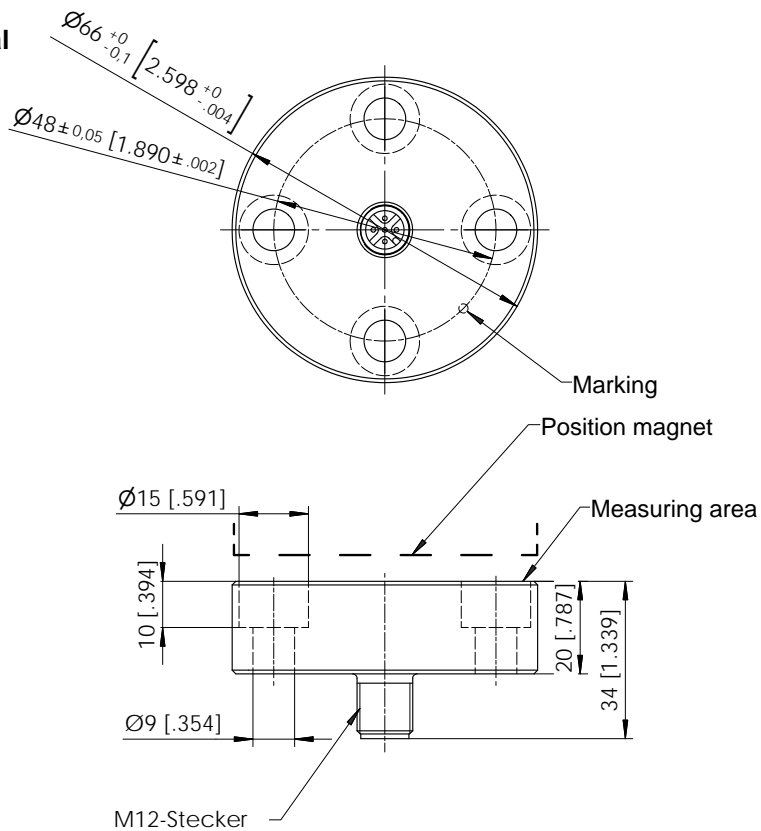
Outline drawing
PRAS5-K, M12 radial



Dimensions in mm [inch]

Dimensions informative only.
 For guaranteed dimensions consult factory.

Outline drawing
PRAS5-K, M12 axial

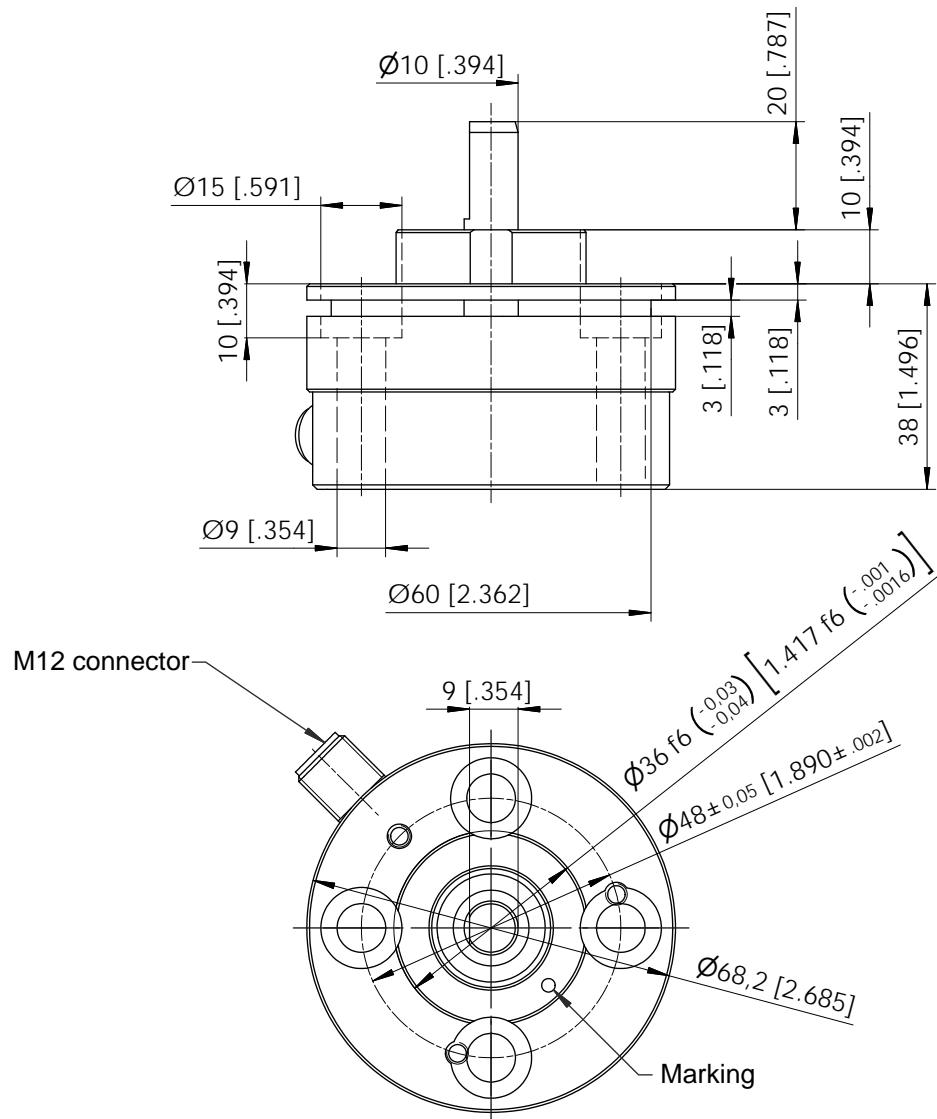


POSIROT®
PRAS5
Magnetic angle sensor



Outline drawing
PRAS5-V, M12 radial

(flange mechanically compatible to the analog angle sensor AWS1)



Dimensions in mm [inch]

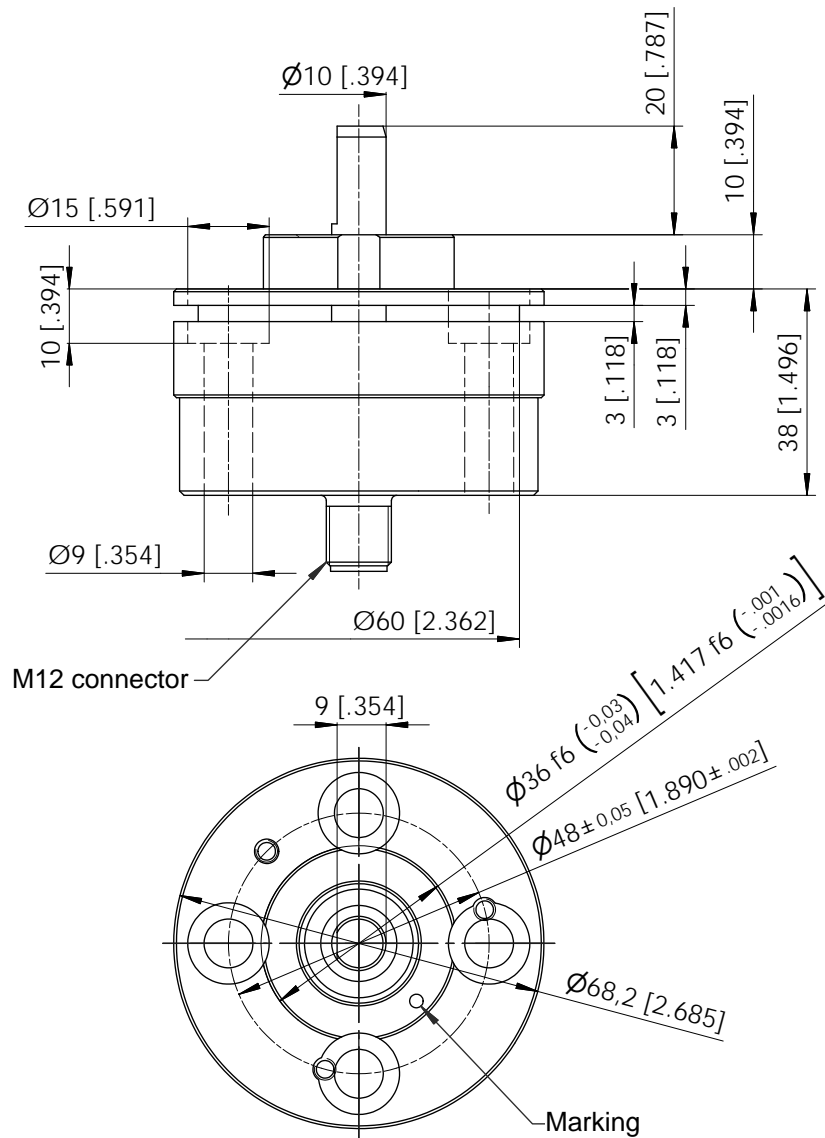
Dimensions informative only.
 For guaranteed dimensions
 consult factory.

POSIROT®
PRAS5
Magnetic angle sensor



Outline drawing
PRAS5-V, M12 axial

(flange mechanically compatible to the analog angle sensor AWS1)



Dimensions in mm [inch]

Dimensions informative only.
 For guaranteed dimensions
 consult factory.

POSIROT® – PRAS, POSITILT® – PTAS

Outputs U2(B), U6 and I1(B)



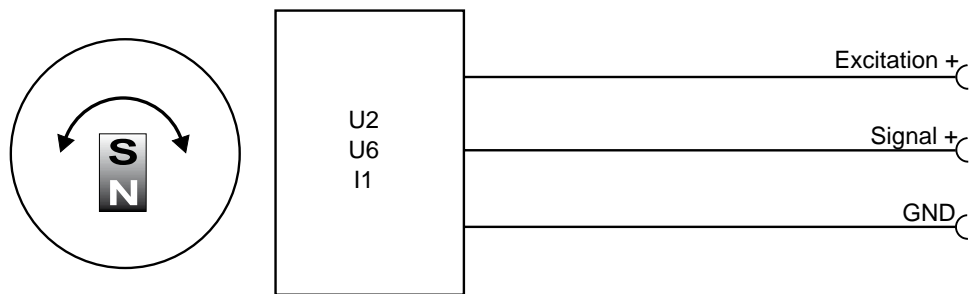
U2 / U2B Voltage Output 0.5 ... 10 V 	Excitation voltage	U2: 18 ... 36 V DC; U2B: 11.5 ... 27 V DC
	Excitation current	40 mA max.
	Output voltage	0.5 ... 10 V DC
	Output current	2 mA max.
	Measuring rate	1 kHz standard
	Stability (temperature)	±50 x 10 ⁻⁶ / °C f.s. (typ.) for 90°...360° ±100 x 10 ⁻⁶ / °C f.s. (typ.) for <90°
	Operating temperature	-40 ... +85 °C (+105 °C as option)
	Protection	Reverse polarity, short circuit
	EMC	According to EN 61326:2004

U6 = U6/5 / U6/8,25 Voltage Output 10 ... 90 % ratiometric 	Excitation voltage	5V DC ±10 % / 8.25 V DC ±10 %
	Excitation current	40 mA max.
	Output voltage	10 ... 90 % of the excitation voltage
	Output current	2 mA max.
	Measuring rate	1 kHz standard
	Stability (temperature)	±50 x 10 ⁻⁶ / °C f.s. (typ.) for 90°...360° ±100 x 10 ⁻⁶ / °C f.s. (typ.) for <90°
	Operating temperature	-40 ... +85 °C (+125 °C as option)
	Protection	Reverse polarity, short circuit
	EMC	According to EN 61326:2004

I1 / I1B Current Output 4 ... 20 mA 	Excitation voltage	I1: 18 ... 36 V DC; I1B: 10 ... 18 V DC
	Excitation current	60 mA max.
	Load resistor	I1: 500 Ω max.; I1B: 250 Ω max.
	Output current	4 ... 20 mA
	Measuring rate	1 kHz standard
	Stability (temperature)	±50 x 10 ⁻⁶ / °C f.s. (typ.) for 90°...360° ±100 x 10 ⁻⁶ / °C f.s. (typ.) for <90°
	Operating temperature	-40 ... +85 °C
	Protection	Reverse polarity, short circuit
	EMC	According to EN 61326:2004

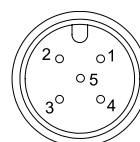
Other outputs available on request.

Output signals



Signal Wiring	Output signals	Connector pin	Cable color
	Excitation +	1	brown
	Signal	2	white
	GND	3	blue
	Do not connect!	4	black
	Do not connect!	5	-

Connection



View to sensor connector

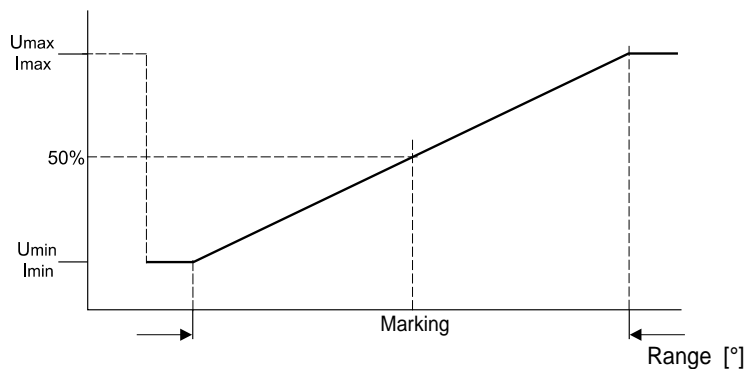
M12A5 / M12R5

POSIROT[®]

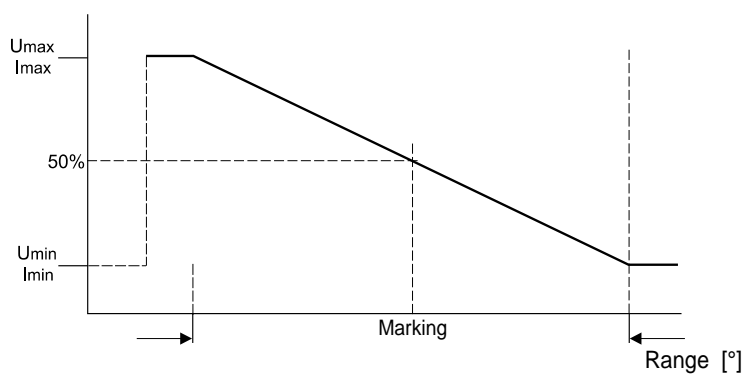
Characteristics for magnetic angle sensors



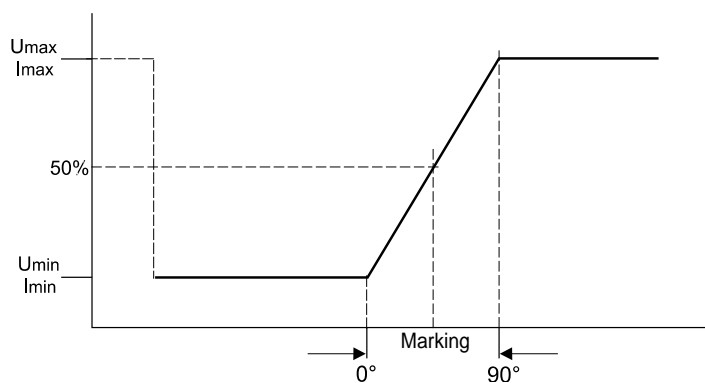
Output signal
(CW increasing)



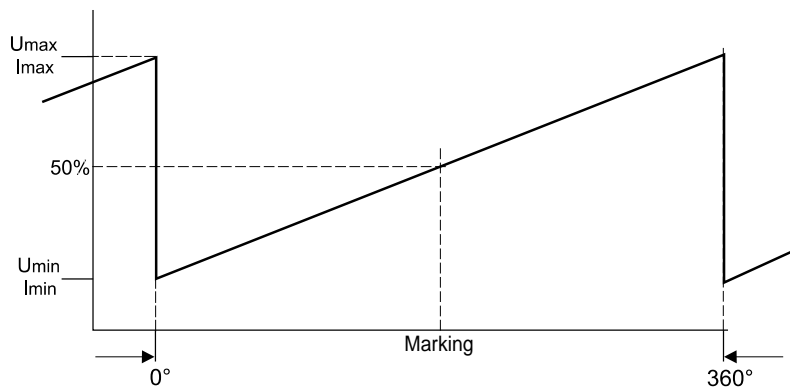
Output signal
(CCW increasing)



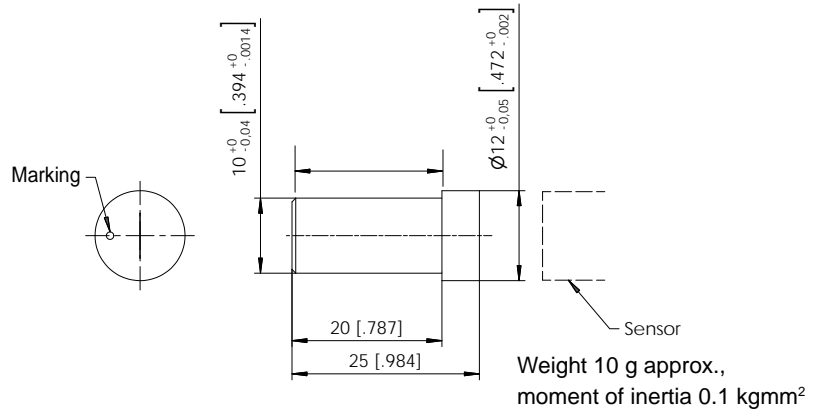
Example angular range 90°



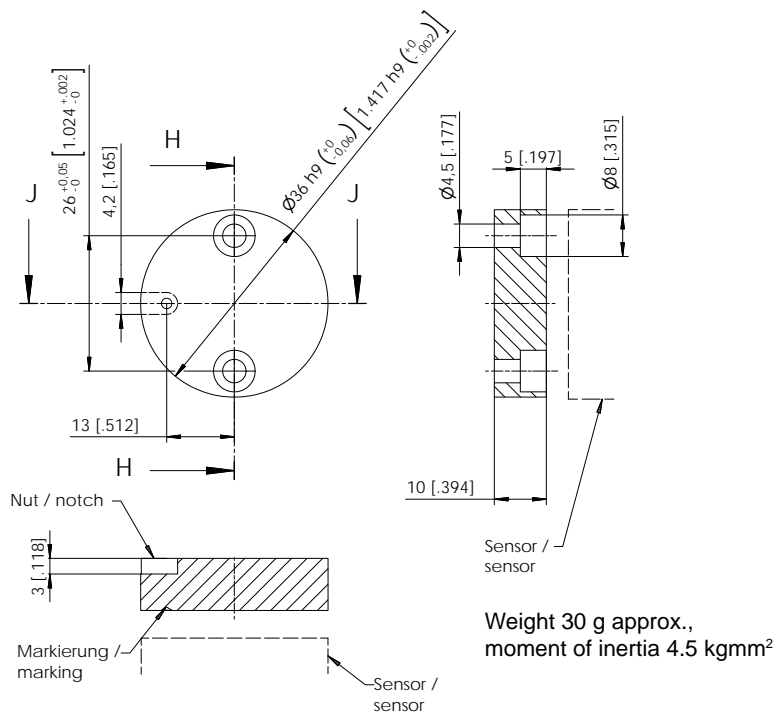
Example angular range 360°



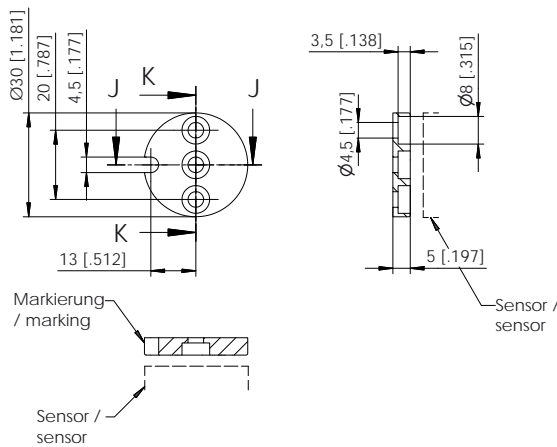
PRMAG1
PRMAG1-Z



PRMAG2
PRMAG2-Z



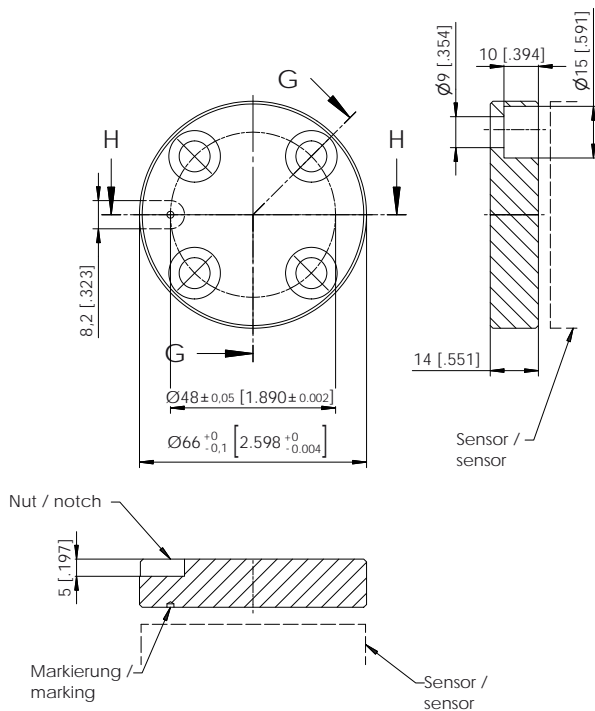
PRMAG20



Dimensions in mm [inch]

Dimensions informative only
 For guaranteed dimensions please consult factory

PRMAG5Z



Dimensions in mm [inch]

Dimensions informative only
 For guaranteed dimensions please consult factory

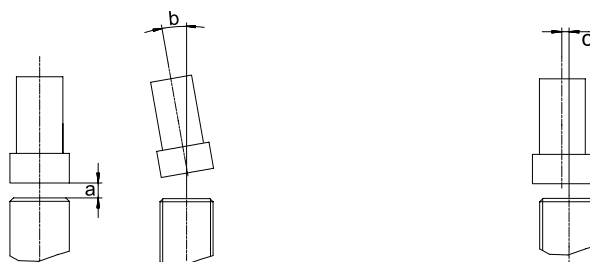
POSIROT® Accessories Position magnets



Sensor	Position magnet	Air gap [mm]	Parallelism [°]	Error by axial misalignment [°]					
				0.2 mm	0.5 mm	1 mm	2 mm	3 mm	4 mm
PRAS1	PRMAG1	0 ... 3.5	5	0.1	0.3	2.0	13.5	–	–
	PRMAG1-Z	0 ... 4.5	5	0.1	0.3	1.5	6.5	–	–
	PRMAG20	0 ... 6.5	5	0.15	0.4	0.8	2.2	5.0	–
PRAS2	PRMAG2	0 ... 5	5	0.1	0.3	0.8	1.8	6.5	–
	PRMAG2-Z	0 ... 9	5	0.1	0.2	0.6	1.5	4.5	8.5
	PRMAG20	0 ... 6	5	0.15	0.4	0.8	2.2	5.0	–
PRAS5	PRMAG2	0 ... 4.5	5	0.1	0.3	0.8	1.8	6.5	–
	PRMAG5-Z	0 ... 7.5	5	0.1	0.2	0.6	1.5	4.5	8.5
	PRMAG20	0 ... 5.5	5	0.15	0.4	0.8	2.2	5.0	–
PRAS20	PRMAG2	0 ... 4.6	5	0.1	0.3	0.8	1.8	6.5	–
	PRMAG20	0 ... 3.5	5	0.15	0.4	0.8	2.2	5.0	–
PRAS21	PRMAG2	0 ... 3.6	5	0.1	0.3	0.8	1.8	6.5	–
	PRMAG20	0 ... 4.6	5	0.15	0.4	0.8	2.2	5.0	–

Sensor	Position magnet	Air gap [mm]	Parallelism [°]	Error by axial misalignment [°]					
				0.2 mm	0.5 mm	1 mm	2 mm	3 mm	4 mm
PRDS1	PRMAG1	0 ... 3	5	0.1	0.3	2.0	13.5	–	–
	PRMAG1-Z	0 ... 4	5	0.1	0.3	1.5	6.5	–	–
	PRMAG20	0 ... 4.5	5	0.15	0.4	0.8	2.2	5.0	–
PRDS2	PRMAG2	0 ... 5	5	0.1	0.3	0.8	1.8	6.5	–
	PRMAG2-Z	0 ... 7	5	0.1	0.2	0.6	1.5	4.5	8.5
	PRMAG20	0 ... 4	5	0.15	0.4	0.8	2.2	5.0	–
PRDS5	PRMAG2	0 ... 4.5	5	0.1	0.3	0.8	1.8	6.5	–
	PRMAG5-Z	0 ... 5.5	5	0.1	0.2	0.6	1.5	4.5	8.5
	PRMAG20	0 ... 3.5	5	0.15	0.4	0.8	2.2	5.0	–

Note: Sensor and position magnet must be mounted aligned!



POSIROT® Accessories Connector Cables



Connector cable for POSIROT® angle sensors 4 pins M12

Suitable for 5-pin sensor connectors M12A5 and M12R5

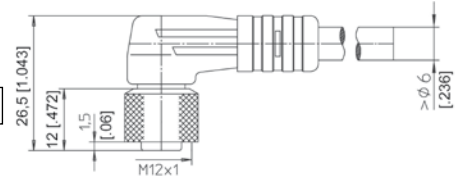
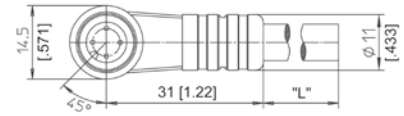
The 4-core screened cable is supplied with a mating 4-pin 90° M12 connector at one end and 4 wires at the other end. Available lengths are 2, 5 and 10 m.

Order code:

KAB - XM - M12/4F/W - LITZE

IP69K: **KAB - XM - M12/4F/W/69K - LITZE**

Length in m



Connector cable for POSIROT® angle sensors 4 pins M12

Suitable for 5-pin sensor connectors M12A5 and M12R5

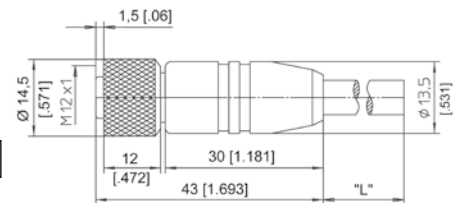
The 4-core screened cable is supplied with a mating 4-pin M12 connector at one end and 4 wires at the other end. Available lengths are 2, 5 and 10 m.

Order code:

KAB - XM - M12/4F/G - LITZE

IP69K: **KAB - XM - M12/4F/G/69K - LITZE**

Length in m



Signal wiring M12, 4 pin

Connector pin / cable color

1	2	3	4
Brown	White	Blue	Black

Connector cable for POSIROT® angle sensors 8 pins M12

Suitable for 5-pin sensor connectors M12A5 and M12R5

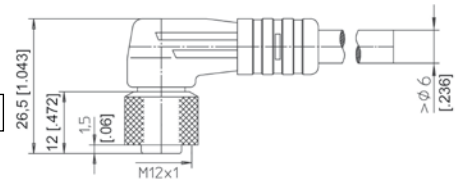
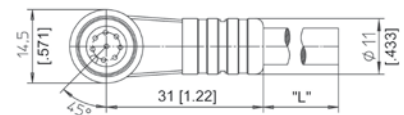
The 8-core screened cable is supplied with a mating 8-pin 90° M12 connector at one end and 8 wires at the other end. Available lengths are 2, 5 and 10 m.

Order code:

KAB - XM - M12/8F/W - LITZE

IP69K: **KAB - XM - M12/8F/W/69K - LITZE**

Length in m



Connector cable for POSIROT® angle sensors 8 pins M12

Suitable for 5-pin sensor connectors M12A5 and M12R5

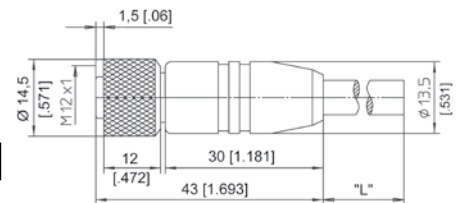
The 8-core screened cable is supplied with a mating 8-pin M12 connector at one end and 8 wires at the other end. Available lengths are 2, 5 and 10 m.

Order code:

KAB - XM - M12/8F/G - LITZE

IP69K: **KAB - XM - M12/8F/G/69K - LITZE**

Length in m



Signal wiring M12, 8 pin

Connector pin / cable color

1	2	3	4	5	6	7	8
White	Brown	Green	Yellow	Grey	Pink	Blue	Red